



# Introduction

## INTRODUCTION TO ALACHUA COUNTY

### WHERE NATURE AND CULTURE MEET

Alachua County's seat, Gainesville, was established in 1854 on land that was part of a grant that the King of Spain gave to Don Fernando Arredondo in 1817. The name "Alachua" is a Seminole word that means jug and the County likely takes its name from the sinkhole in Paynes Prairie.

Alachua County is proud of its history, having over 65 listings on the National Register Historic Places including two National Historic Landmarks: Marjorie Kinnan Rawlings House and Farm and the Dudley Farm.

Alachua County encompasses 969 square miles and includes the municipalities of Archer, Alachua, Gainesville, Hawthorne, High Springs, LaCrosse, Micanopy, Newberry, and Waldo. Located in the north central part of Florida, 85 miles from the Georgia state line, 50 miles from the Gulf of Mexico and 67 miles from the Atlantic Ocean.

The County has an estimated year-round population of 287,872 (4/21/22) including more than 50,000 University of Florida students.

Alachua County is a political subdivision of the State of Florida and is guided by an elected five-member Board of County Commissioners. Florida Statutes, Chapter 125 establishes the powers and duties of the County Commission and the County Manager.

The County Manager is appointed by the Board of County Commissioners and is responsible for carrying out the directives and policies of the Board. The County Manager is also responsible for the management and supervision of all functions and personnel under the Board of County Commissioners. The County Attorney, who is also appointed by and responsible to the Board of County Commissioners, provides legal counsel to the Board and departments/offices of the Board of County Commissioners in all manners of civil law relating to Alachua County.

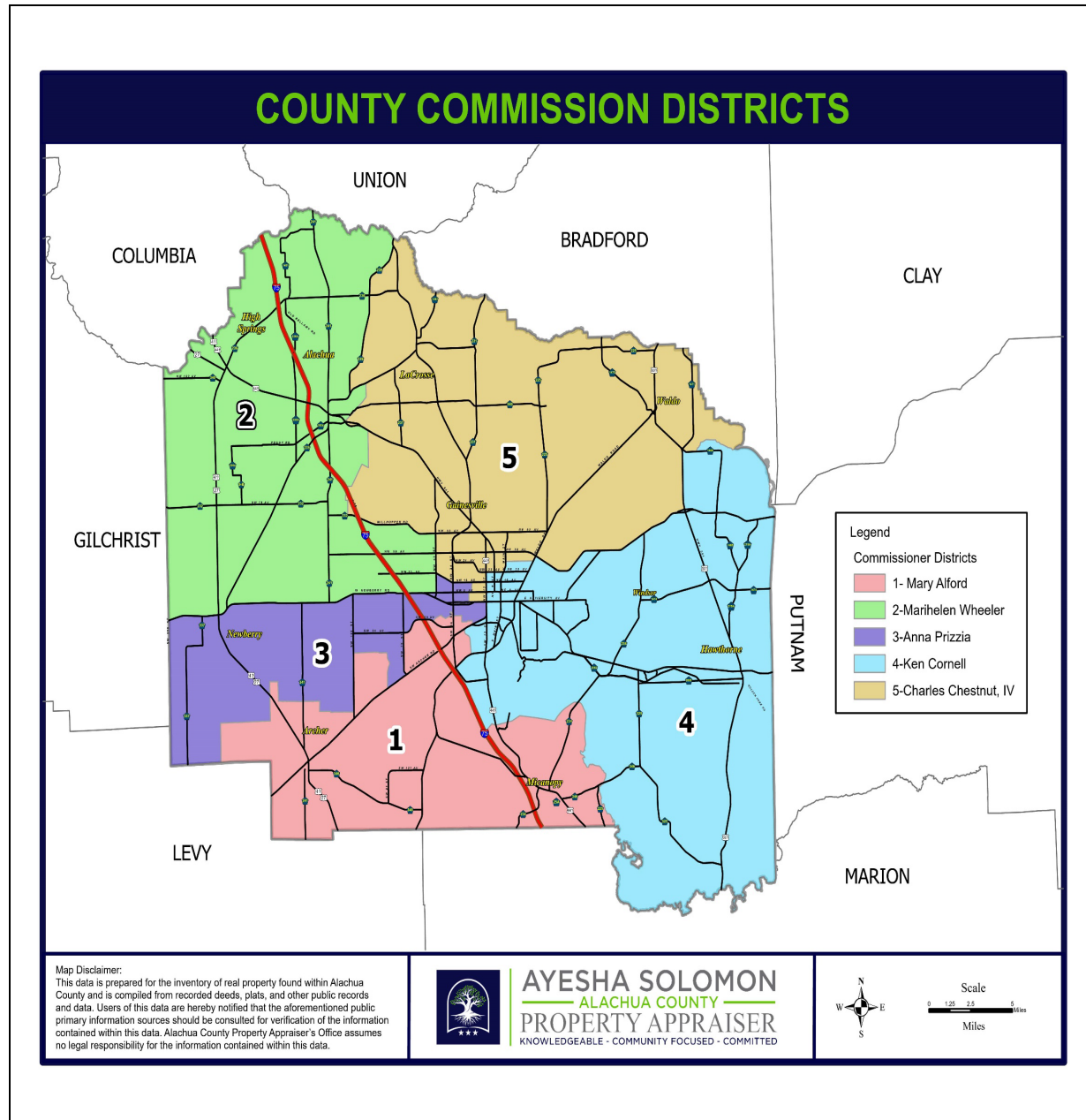
Alachua County has five Constitutional Officers, which include the Clerk of the Court, the Property Appraiser, the Sheriff, the Supervisor of Elections, and the Tax Collector. Constitutional Officers are elected to administer a specific function of County government and are directly accountable to the public. Other elected officials of Alachua County include the Judiciary, State Attorney, and Public Defender.

The Board of County Commissioners is obligated to fund the operating budget of elected officials partly or in whole. Alachua County also has several appointed Boards and Committees that serve in an advisory capacity to the Board of County Commissioners.

Alachua County is committed to fiscal responsibility as well as providing responsive, quality services to our citizens. As mandated by Florida law, we adopt a balanced budget yearly—revenues must offset expenditures.

The County continues to provide many beneficial services to the community; however, macroeconomic, and other external factors, such as state mandates, continue to increase the costs for these services.

As with any government, there are always going to be calls for either more services, demand for efficiency or changes in levels of taxation. The County continually balances these interests through a series of budget preparation meetings.



# Alachua County

Florida's 24th most populous county  
with 1.3% of Florida's population



## Census Population

Census Population	Alachua County	Florida
1980 Census	151,369	9,746,961
1990 Census	181,596	12,938,071
2000 Census	217,955	15,982,824
2010 Census	247,336	18,801,332
2020 Census	278,468	21,538,187
% change 2010-2020	12.6%	14.6%
Age		
% Under 18 years of age	18.2%	19.5%
Race (alone) & Ethnicity		
% Not Hispanic-White	57.6%	51.5%
% Not Hispanic-Black or African American	18.4%	14.5%
% Not Hispanic-American Indian and Alaska Native	0.2%	0.2%
% Not Hispanic-Asian	6.4%	2.9%
% Not Hispanic-Native Hawaiian and Other Pacific Islander	0.0%	0.1%
% Not Hispanic-Some Other Race	0.6%	0.6%
% Not Hispanic-Two or More Races	4.7%	3.7%
% Hispanic or Latino (of any race)	12.1%	26.5%

## Population Estimates

Population Estimates	Alachua County	Florida
2021 Estimate	284,607	21,898,945
% change 2020-2021	2.2%	1.7%
2022 Estimate	287,872	22,276,132
% change 2020-2022	3.4%	3.4%
Based on 2022 Estimate		
2025	297,647	23,218,811
2030	311,521	24,588,452
2035	322,138	25,675,568
2040	330,203	26,537,878
2045	336,873	27,270,041
2050	343,000	27,953,598

## Population Characteristics

Population Characteristics	Alachua County	Florida
Language spoken at home other than English		
Persons aged 5 and over	15.0%	29.8%
Place of birth		
Foreign born	10.7%	21.0%
Veteran status		
Civilian population 18 and over	6.9%	8.2%

## Migration

Residence 1 Year Ago	Alachua County	Florida
Persons aged 1 and over		
Same house	78.1%	85.2%
Different house in the U.S.	20.8%	13.8%
Same county in Florida	10.6%	7.9%
Different county in Florida	7.5%	3.1%
Different county in another state	2.7%	2.9%
Abroad	1.1%	0.9%

## Real Gross Domestic Product

Real GDP (Thousands of Chained 2012 Dollars)	Alachua County	Florida
2015 GDP	11,236,022	852,242,411
Percent of the State	1.3%	
2016 GDP	11,440,644	881,539,238
Percent of the State	1.3%	
2017 GDP	11,879,414	912,687,386
Percent of the State	1.3%	
2018 GDP	12,277,166	941,626,696
Percent of the State	1.3%	
2019 GDP	12,553,649	965,672,478
Percent of the State	1.3%	
2020 GDP	12,770,647	950,164,387
Percent of the State	1.3%	
2021 GDP	13,560,730	1,029,575,591
Percent of the State	1.3%	

## Population by Housing Type

Population by Housing Type	Alachua County	Florida
Household Population	260,839	21,073,604
Household Population per Occupied Housing Unit	2.31	2.47
Group Quarters Population	17,629	464,583

## Census Housing

Census Housing	Alachua County	Florida
Housing units	123,359	9,865,350
Occupied	112,723	8,529,067
Vacant	10,636	1,336,283

## Building Permits

Building Permits	Alachua County	Florida
2000	1,973	155,269
2010	454	38,679
2020	1,767	164,074
2021	2,179	213,494

## Density

Density	Alachua County	Florida
Persons per square mile		
2000	249.3	296.4
2010	282.7	350.6
2020	318.0	401.4
2022	325.0	408.2

## Households and Family Households

Households	Alachua County	Florida
Total households, 2000 Census	87,509	6,338,075
Family households, 2000 Census	47,819	4,210,760
% with own children under 18	46.2%	42.3%
Total households, 2010 Census	100,516	7,420,802
Family households, 2010 Census	53,500	4,835,475
% with own children under 18	41.3%	40.0%
Average Household Size, 2010 Census	2.32	2.48
Average Family Size, 2010 Census	2.91	3.01

According to Census definitions, a household includes all of the people who occupy a housing unit. The occupants may be a single family, one person living alone, two or more families living together, or any other group of related or unrelated people who share living quarters. A family includes a householder and one or more other people living in the same household who are related to the householder by birth, marriage, or adoption.  
Census counts may be corrected for Census Count Question Resolution (CCR).



Employment and Labor Force

Establishments 2021	Alachua County	Florida	Establishments % of All Industries, 2021	Alachua County	Florida
All industries	8,002	820,313	All industries	8,002	820,313
Natural Resource & Mining	97	5,545	Natural Resource & Mining	1.2%	0.7%
Construction	655	78,395	Construction	8.2%	9.6%
Manufacturing	204	22,795	Manufacturing	2.5%	2.8%
Trade, Transportation and Utilities	1,339	151,294	Trade, Transportation and Utilities	16.7%	18.4%
Information	167	16,928	Information	2.1%	2.1%
Financial Activities	744	89,810	Financial Activities	9.3%	10.9%
Professional & Business Services	2,030	205,828	Professional & Business Services	25.4%	25.1%
Education & Health Services	1,154	92,489	Education & Health Services	14.4%	11.3%
Leisure and Hospitality	760	63,682	Leisure and Hospitality	9.5%	7.8%
Other Services	626	57,817	Other Services	7.8%	7.0%
Government	131	5,893	Government	1.6%	0.7%

Average Annual Employment % of All Industries, 2021	Alachua County	Florida	Average Annual Wage 2021	Alachua County	Florida
All industries	132,635	8,859,818	All industries	\$56,050	\$60,299
Natural Resource & Mining	0.9%	0.8%	Natural Resource & Mining	\$39,656	\$42,128
Construction	4.4%	6.5%	Construction	\$51,760	\$59,088
Manufacturing	3.1%	4.4%	Manufacturing	\$62,104	\$69,997
Trade, Transportation and Utilities	15.4%	20.7%	Trade, Transportation and Utilities	\$45,901	\$53,762
Information	1.3%	1.6%	Information	\$70,642	\$104,461
Financial Activities	4.4%	6.9%	Financial Activities	\$65,418	\$93,945
Professional & Business Services	11.6%	16.5%	Professional & Business Services	\$56,384	\$74,787
Education & Health Services	19.9%	15.0%	Education & Health Services	\$58,142	\$59,043
Leisure and Hospitality	10.7%	12.7%	Leisure and Hospitality	\$24,672	\$31,029
Other Services	2.2%	3.0%	Other Services	\$38,307	\$44,107
Government	26.1%	11.8%	Government	\$72,825	\$61,210

Industries may not add to the total due to confidentiality and unclassified.

Labor Force as Percent of Population Aged 18 and Older	Alachua County	Florida	Unemployment Rate	Alachua County	Florida
2000	67.4%	61.8%	2000	3.0%	3.8%
2010	62.7%	64.2%	2010	7.8%	10.8%
2020	60.3%	58.7%	2020	5.7%	8.1%
2021	59.1%	59.3%	2021	3.8%	4.6%
2022	59.5%	60.6%	2022	2.8%	2.9%

Income and Financial Health

Personal Income (\$000s)	Alachua County	Florida	Per Capita Personal Income	Alachua County	Florida
2000	\$5,481,992	\$472,851,789	2000	\$25,076	\$29,466
2010	\$8,827,457	\$732,457,478	2010	\$35,625	\$38,872
% change 2000-2010	61.0%	54.9%	% change 2000-2010	42.1%	31.9%
2020	\$13,615,822	\$1,235,793,410	2020	\$48,858	\$57,292
% change 2010-2020	54.2%	68.7%	% change 2010-2020	37.1%	47.4%
2021	\$14,622,893	\$1,356,318,587	2021	\$52,367	\$62,270
% change 2020-2021	7.4%	9.8%	% change 2020-2021	7.2%	8.7%

Earnings by Place of Work (\$000s)	Alachua County	Florida	Median Income	Alachua County	Florida
2000	\$4,473,884	\$308,751,767	Median Household Income	\$53,314	\$61,777
2010	\$6,888,782	\$438,983,914	Median Family Income	\$79,712	\$74,237
% change 2000-2010	54.0%	42.2%			
2020	\$10,051,461	\$686,243,741			
% change 2010-2020	45.9%	56.3%			
2021	\$10,839,413	\$764,483,116			
% change 2020-2021	7.8%	11.4%			

Workers Aged 16 and Over	Alachua County	Florida	Personal Bankruptcy Filing Rate (per 1,000 population)	Alachua County	Florida
Place of Work in Florida			12-Month Period Ending December 31, 2021	0.65	1.38
Worked outside county of residence	5.8%	17.8%	12-Month Period Ending December 31, 2022	0.53	1.10
Travel Time to Work			State Rank	59	NA
Mean travel time to work (minutes)	22.0	27.9			

NonBusiness Chapter 7 & Chapter 13

Reported County Government Revenues and Expenditures

Revenue 2019-20	Alachua County	Florida*	Expenditures 2019-20	Alachua County	Florida*
Total - All Revenue Account Codes (\$000s)	\$459,847.5	\$52,645,134.4	Total - All Expenditure Account Codes (\$000s)	\$431,879.84	\$48,804,501.28
Per Capita \$	\$1,693.18	\$2,553.85	Per Capita \$	\$1,590.20	\$2,367.54
% of Total	100.0%	100.0%	% of Total	100.0%	92.7%
Taxes (\$000s)	\$182,260.1	\$16,651,821.4	General Government Services** (\$000s)	\$94,400.11	\$8,468,311.68
Per Capita \$	\$671.09	\$807.79	Per Capita \$	\$347.59	\$410.80
% of Total	39.6%	31.6%	% of Total	21.9%	16.1%
Permits, Fee, and Special Assessments (\$000s)	\$29,846.8	\$2,256,256.6	Public Safety (\$000s)	\$150,079.08	\$12,039,077.73
Per Capita \$	\$109.90	\$109.45	Per Capita \$	\$552.60	\$584.02
% of Total	6.5%	4.3%	% of Total	34.8%	22.9%
Intergovernmental Revenues (\$000s)	\$61,751.6	\$7,095,752.8	Physical Environment (\$000s)	\$39,412.88	\$5,403,299.24
Per Capita \$	\$227.37	\$344.22	Per Capita \$	\$145.12	\$262.12
% of Total	13.4%	13.5%	% of Total	9.1%	10.3%
Charges for Services (\$000s)	\$84,819.3	\$14,148,555.9	Transportation (\$000s)	\$23,632.58	\$5,666,984.30
Per Capita \$	\$312.31	\$686.36	Per Capita \$	\$87.02	\$274.91
% of Total	18.4%	26.9%	% of Total	5.5%	10.8%
Judgments, Fines, and Forfeits (\$000s)	\$1,737.8	\$161,937.7	Economic Environment (\$000s)	\$11,352.57	\$1,793,284.71
Per Capita \$	\$6.40	\$7.86	Per Capita \$	\$41.80	\$86.99
% of Total	0.4%	0.3%	% of Total	2.6%	3.4%
Miscellaneous Revenues (\$000s)	\$13,505.0	\$1,629,204.3	Human Services (\$000s)	\$16,929.09	\$4,112,446.49
Per Capita \$	\$49.73	\$79.03	Per Capita \$	\$62.33	\$199.50
% of Total	2.9%	3.1%	% of Total	3.9%	7.8%
Other Sources (\$000s)	\$85,927.0	\$10,701,605.8	Culture / Recreation (\$000s)	\$2,632.91	\$1,960,626.16
Per Capita \$	\$316.39	\$519.14	Per Capita \$	\$9.69	\$95.11
% of Total	18.7%	20.3%	% of Total	0.6%	3.7%
			Other Uses and Non-Operating (\$000s)	\$75,929.71	\$8,431,538.28
			Per Capita \$	\$279.58	\$409.02
			% of Total	17.6%	16.0%
			Court-Related Expenditures (\$000s)	\$17,510.91	\$928,932.70
			Per Capita \$	\$64.48	\$45.06
			% of Total	4.1%	1.8%

\* All County Governments Except Duval - The consolidated City of Jacksonville / Duval County figures are included in municipal totals rather than county government totals.

\*\* (Not Court-Related)

Quality of Life

Crime	Alachua County	Florida
Crime rate, 2020 (index crimes per 100,000 population)	3,208.5	2,158.0
Admissions to prison FY 2021-22	677	25,362
Admissions to prison per 100,000 population FY 2021-22	235.2	113.9

Health Insurance Status

Percent Insured by Age Group	Alachua County	Florida
Under 65 years	88.5%	84.5%
Under 19 years	93.9%	93.0%
18 to 64 years	86.8%	81.6%

State Infrastructure

Transportation	Alachua County	Florida
State Highway		
Centerline Miles	293.5	12,123.4
Lane Miles	1,042.5	45,337.5
State Bridges		
Number	71	7,079

State and Local Taxation

2022	Alachua County	Florida
	County-Wide	Not County-Wide*
County	7,7662	1,4906
School	6,4980	
Municipal		3,2648
Special Districts	1,5177	0,2392

\*MSTU included in Not County-Wide "County" category

State Facilities

Buildings/Facilities (min. 300 Square Feet)	Alachua County	Florida
Number	364	9,426
Square Footage	1,686,314	65,539,144

Education

Public Education Schools	Alachua County	Florida
Traditional Setting (2022-23)	School District	
Total (state total includes special districts)	52	3,780
Elementary	28	1,878
Middle	9	569
Senior High	10	725
Combination	5	608

Educational attainment

Persons aged 25 and older	Alachua County	Florida
% HS graduate or higher	93.2%	89.0%
% bachelor's degree or higher	45.2%	31.5%

Prepared by:  
 Florida Legislature  
 Office of Economic and Demographic Research  
 111 W. Madison Street, Suite 574  
 Tallahassee, FL 32399-6588  
 (850) 487-1402 <http://edr.state.fl.us>



April 2023

# Alachua County Board of County Commissioners



Chair  
Anna Prizzia



Vice Chair  
Mary Alford



Ken Cornell



Charles "Chuck" Chestnut, IV



Marihelen Wheeler

# Principal Officials



## Appointed Officials



Michele Lieberman  
County Manager



Sylvia E. Torres  
County Attorney

## Constitutional Officers



Kim A. Barton  
Supervisor of Elections



Ayesha Solomon  
Property Appraiser



Emery A. Gainey  
Sheriff



John Power  
Tax Collector



J.K. "Jess" Irby  
Clerk of Circuit Court

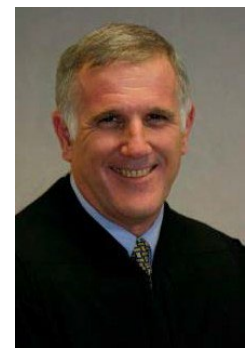
## Judicial



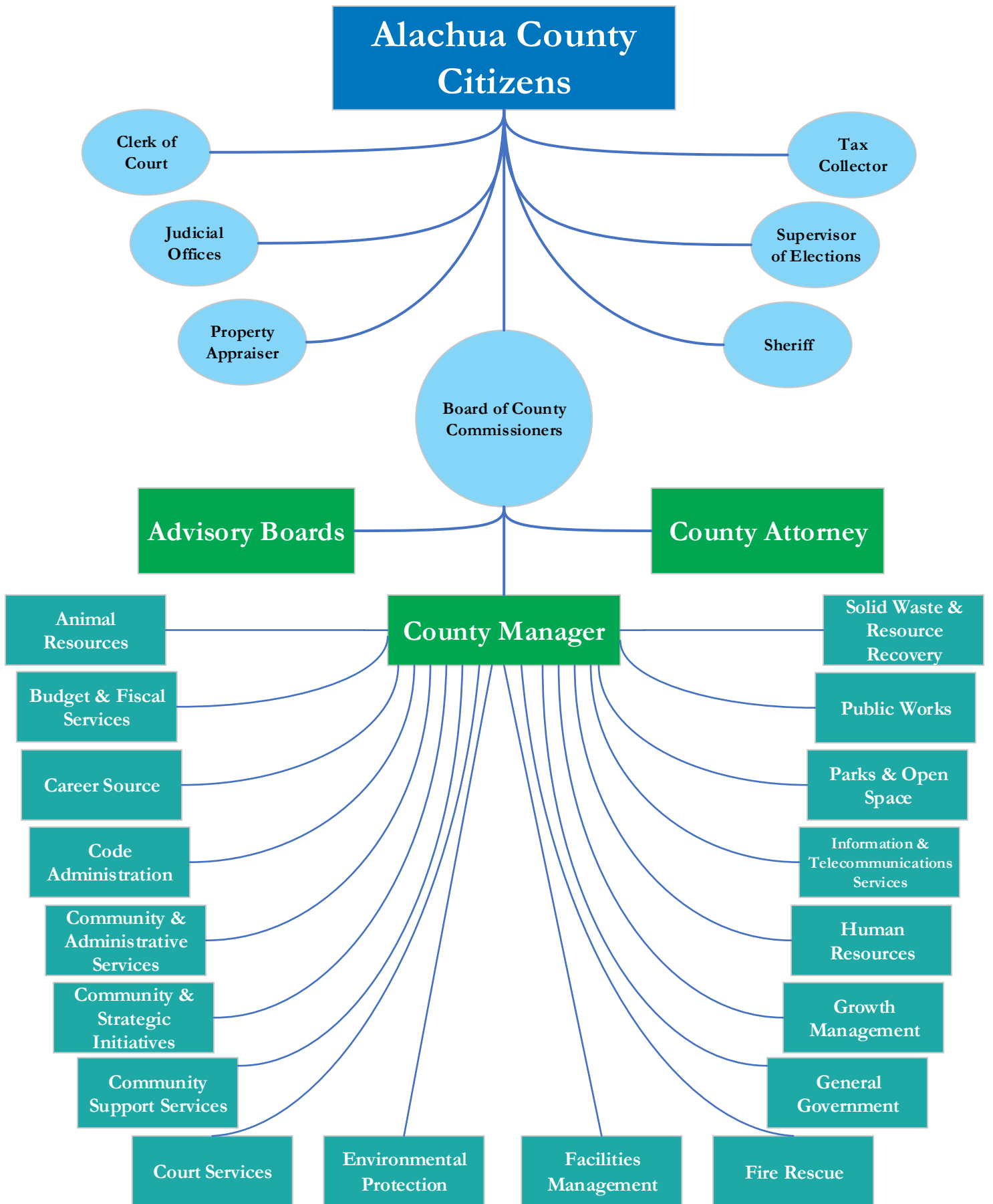
Brian S. Kramer  
State Attorney



Stacy A. Scott  
Public Defender



James P. Nilon  
Chief Judge





GOVERNMENT FINANCE OFFICERS ASSOCIATION

*Distinguished  
Budget Presentation  
Award*

PRESENTED TO

**Alachua County Office of Management and Budget  
Florida**

For the Fiscal Year Beginning

**October 01, 2022**

*Christopher P. Morill*

Executive Director

**Prepared By:**

**THE ALACHUA COUNTY BOARD OF COUNTY COMMISSIONERS' OFFICE OF  
MANAGEMENT AND BUDGET STAFF**

Tommy Crosby, CPA  
Assistant County Manager

Donna Bradbrook, MBA  
Strategic Performance Manager

Maureen Rischitelli, MPA, ML  
Budget Manager

Leslie Moyer, CGFO  
Senior Financial Management Analyst

Maureen Powell, MAOL, CGFO  
Financial Management Analyst

Stephanie Loven, MPA, CGFO  
Financial Management Analyst

Alex Corona  
Financial Management Analyst

**Credits**

Mark Sexton  
Communications

Takumi Sullivan  
Communications

Erika Aenlle  
Budget and Fiscal Services

Susie Funderburk  
Budget and Fiscal Services

Brandon Pohja  
Budget and Fiscal Services

**THANK YOU**

**A very special thank you to all County employees and the staff of the  
Constitutional and Judicial Offices for their assistance.**



## **The Alachua County Budget Is Your Budget - GET INVOLVED**

Each year Alachua County adopts a balanced budget. The Office of Management and Budget (OMB) prepares the budget, the County Manager (CM) oversees the process, citizens review the budget, and the final balanced budget is adopted by the Board of County Commissioners (BoCC) in September of each year.

In 1980 Truth in Millage (TRIM) Act was adopted by the Florida Legislature. This law is designed to inform taxpayers which governmental entity is responsible for the taxes levied and the amount of tax liability taxpayers owe to each taxing authority. The property appraiser sends this information, known as the TRIM notice, to the property owner. The statutory requirements that must be followed are found in Florida Statute 200.065.

The property appraiser (PA) provides total assessed value of nonexempt property to taxing authorities by June 1 for budget planning purposes. By July 1, the property appraiser certifies the taxable value of each taxing authority.

The County Manager prepares her budget message as a component of the Annual Budget that is submitted to the Board of County Commissioners in June. The message incorporates several tables and charts detailing various aspects of this information.

The Board of County Commissioners, County Manager, and the public, during the months of July, August and September continue to review and further develop the final millage and budget. The final adopted budget book reflects updates that have occurred from the original submission.

With the continued leadership of the Board of County Commissioners, the dedication of our talented employees and the active engagement of citizens and partners, Alachua County continues to meet the current and foreseeable opportunities facing our community.

Alachua County encourages all citizens to get involved with the budget process. During the year, the County hosts numerous public hearings and budget meetings that are open to the public.

More information about involvement: <https://youtu.be/9cbJt3AwLMo>

### **Budget Dates to Remember**

July 11, 2023 – Board of County Commissioners sets Millage & Assessment Rates

September 12, 2023 – First Public Hearing on Millage Rates and Budget

September 26, 2023 - Adoption of Final Millage Rates and Budget